

CAPSULE COLLECTION

Elite

CHOICE COLOR

CUT AND COLOUR
STEP BY STEP



MEDAVITA

TECHNICAL DIAGNOSIS



7,34

CHOICE COLOR ELITE BASE COLOUR

Choice Color Elite 8.43 on roots,
lengths and ends

Processing time

35 minutes

Mixing ratio

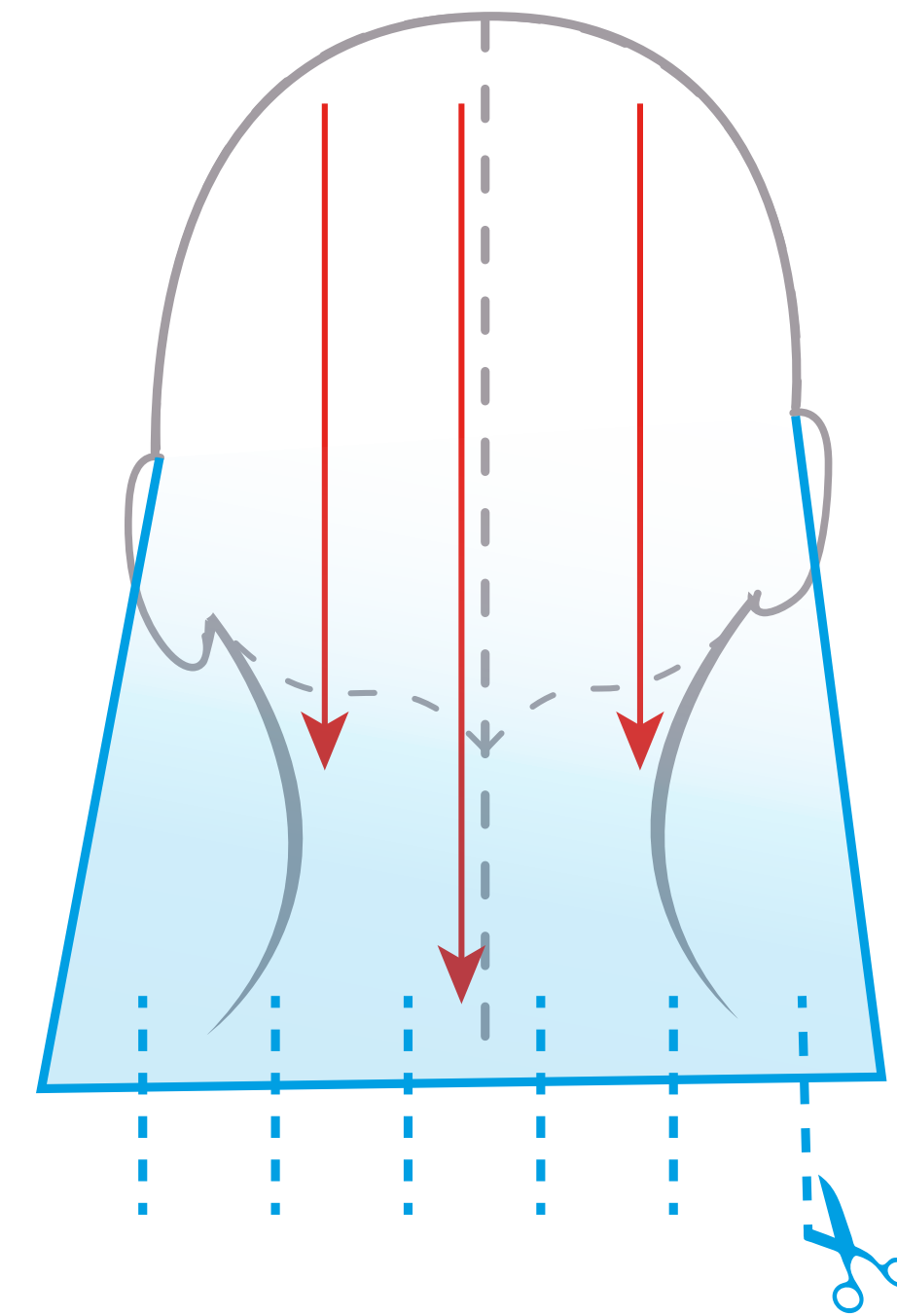
1:1 20 vol. with Superior Oxidising Emulsion



CUT

STEP BY STEP

Start by defining the base perimeter: comb all the hair behind the shoulders and cut to the desired length with a horizontal cutting line and using the **point cutting technique**.

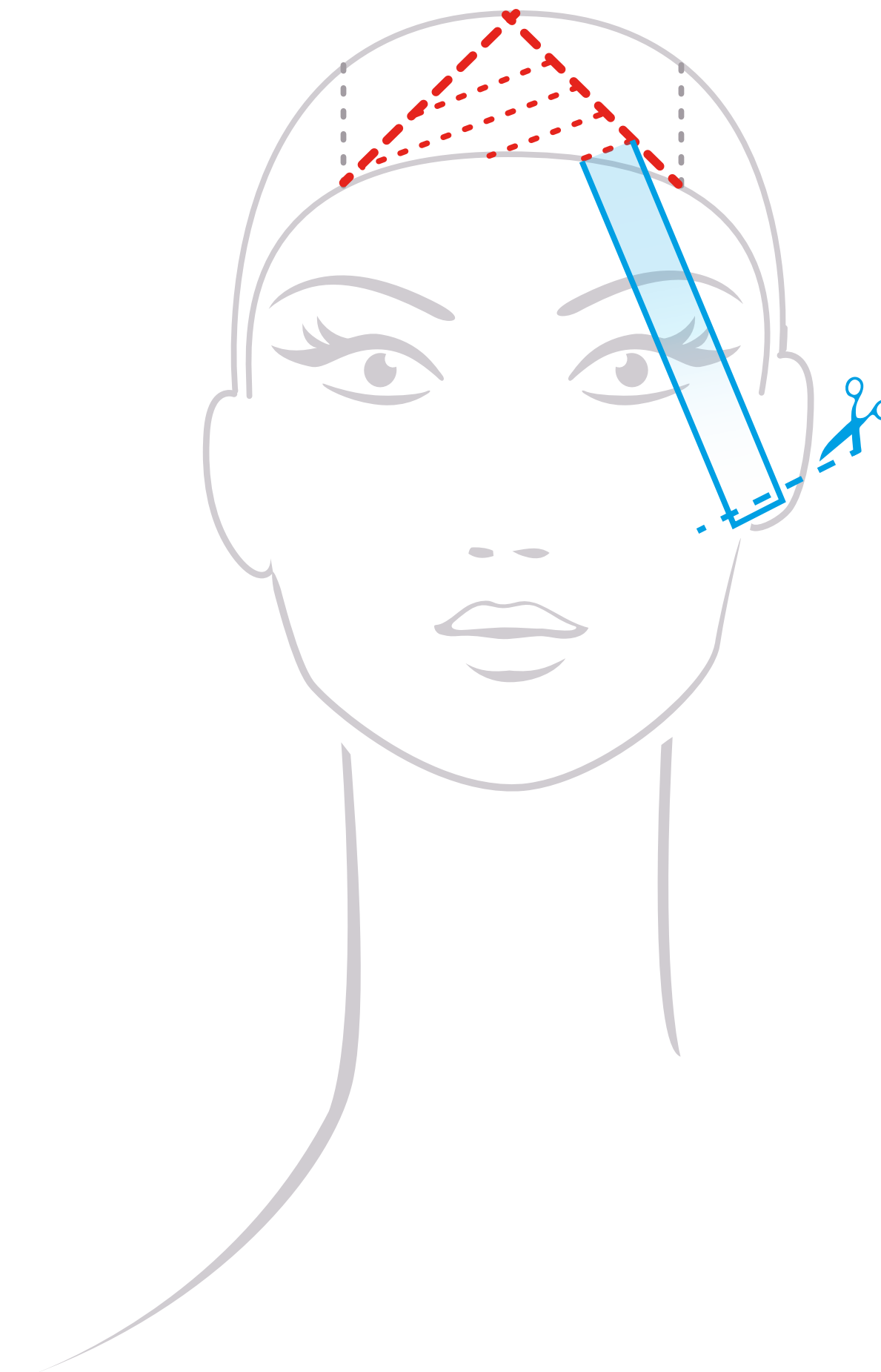


CUT

STEP BY STEP

Isolate the fringe triangle from the rest of the hair and comb in natural fall.

Create a 2/3 cm guide line with a diagonal dividing line at 30°, comb the strand so that it is perpendicular to the section, with minimal projection and cut using the **club cutting technique**, in a line parallel to the base section.

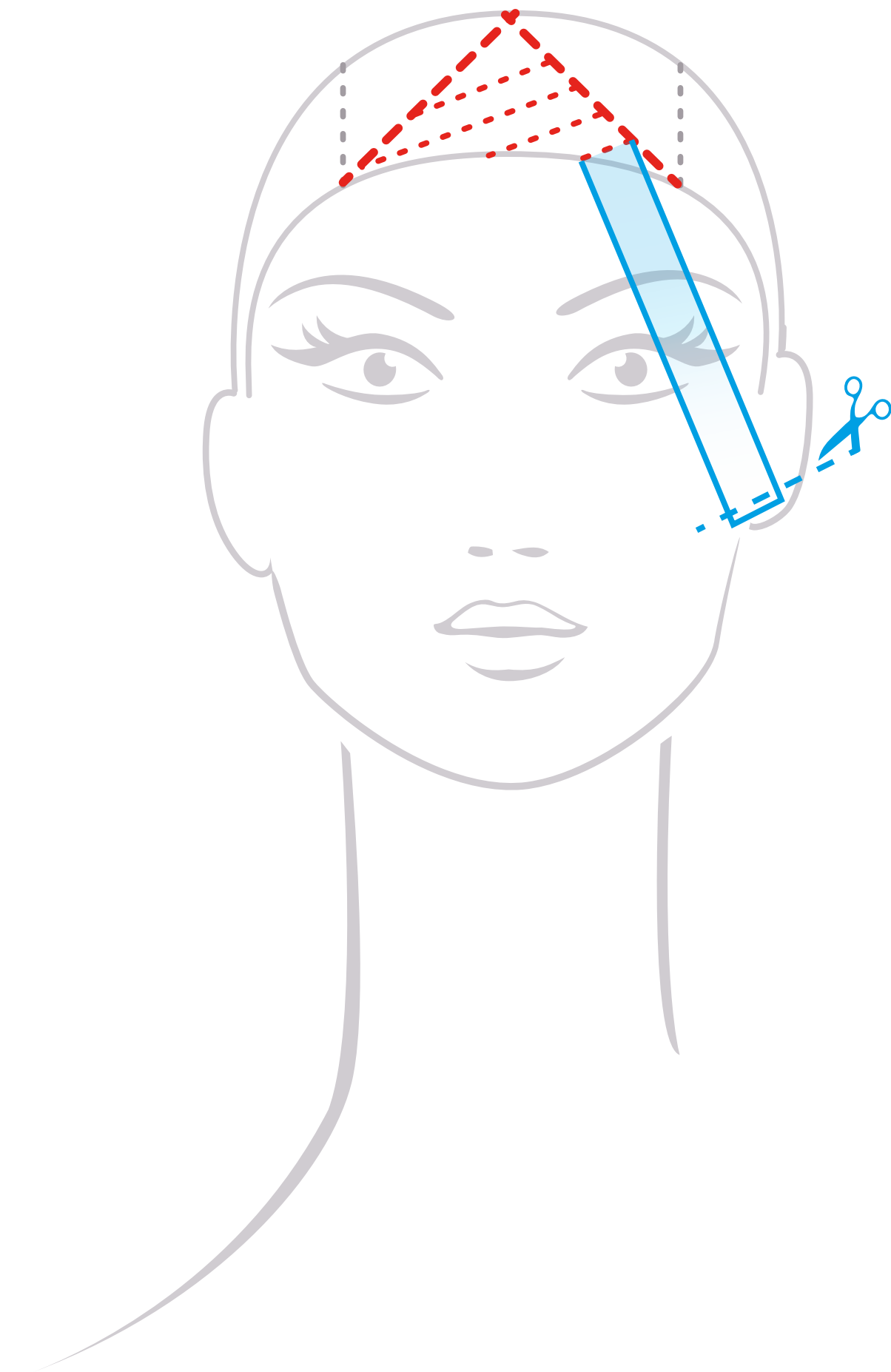


CUT

STEP BY STEP

Cut the entire fringe with a **mobile guide line**.

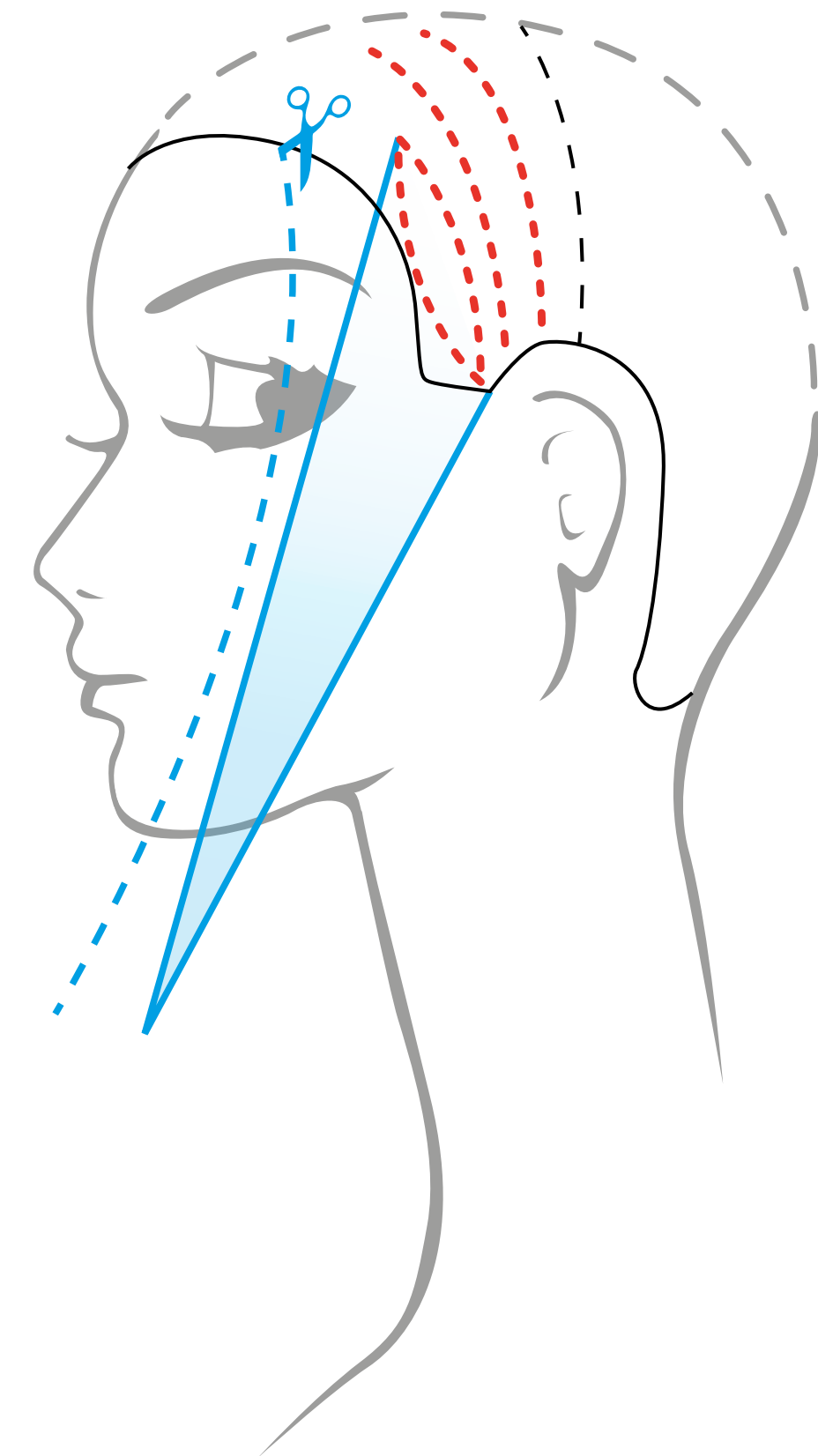
This will create a full, compact, slightly asymmetrical fringe.



CUT

STEP BY STEP

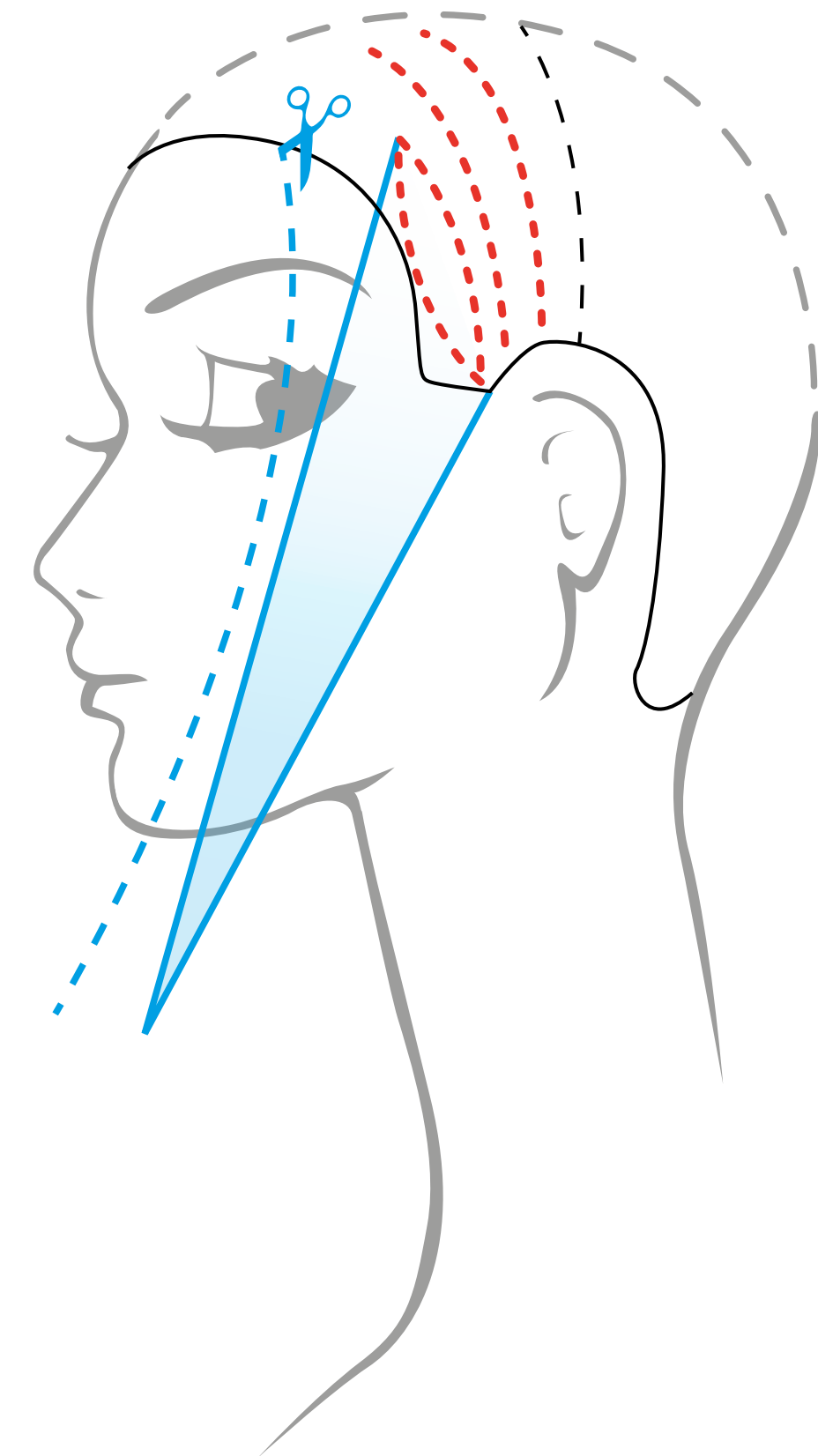
To connect the front sides with the fringe and frame the face: take sections on both sides no wider than 1/2 cm, with a 45° backward angle, from the front hairline to behind the ear.



CUT

STEP BY STEP

Comb the strands, carrying them towards the face, so that they are perpendicular to the base section and, taking the length of the fringe as a guide line, cut gently using the **pinch cutting technique**.

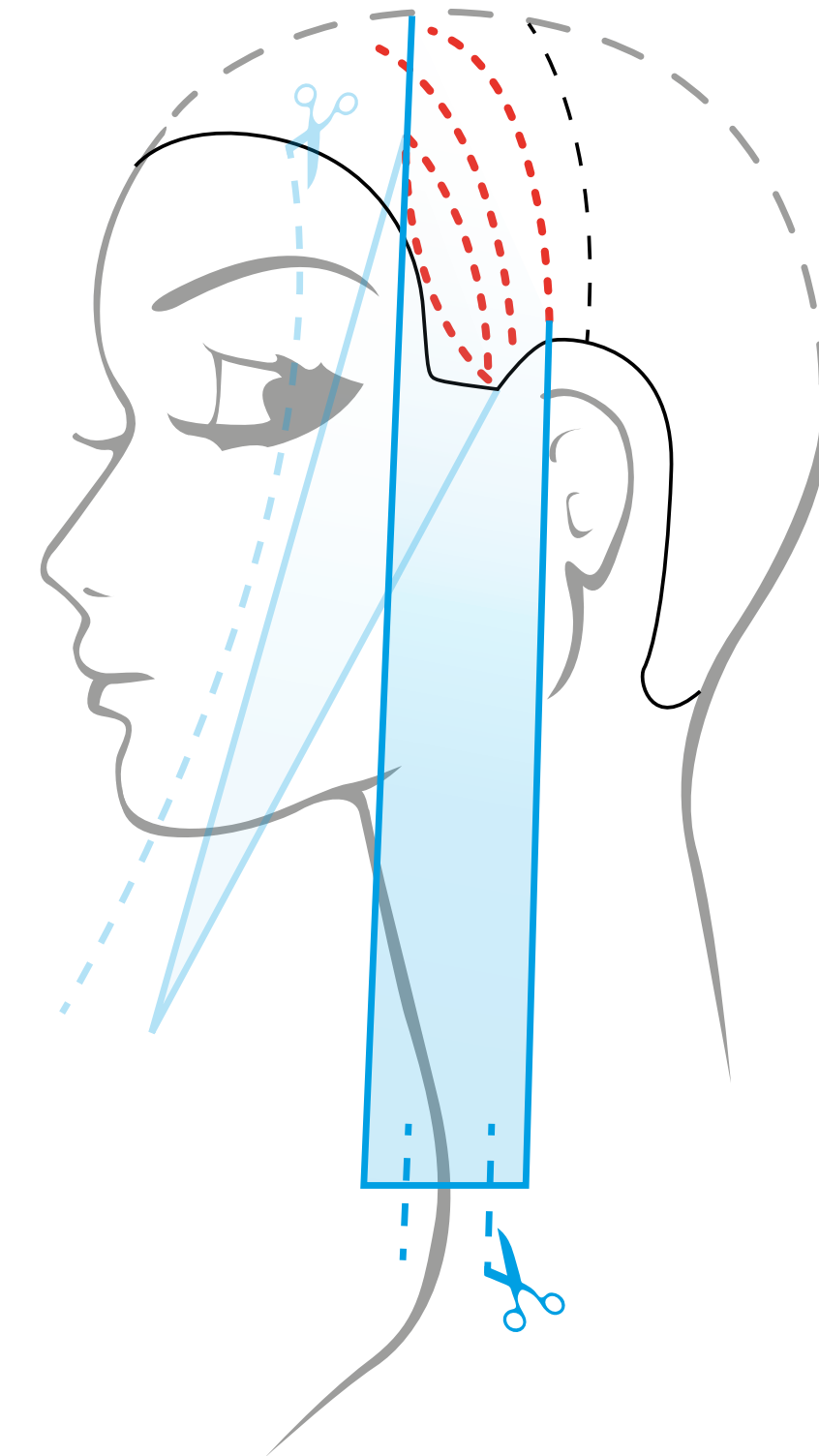


CUT

STEP BY STEP

On completing both sides, thin and texturize the ends using the deep **point cutting technique**.

The sides and the back area will not be connected.

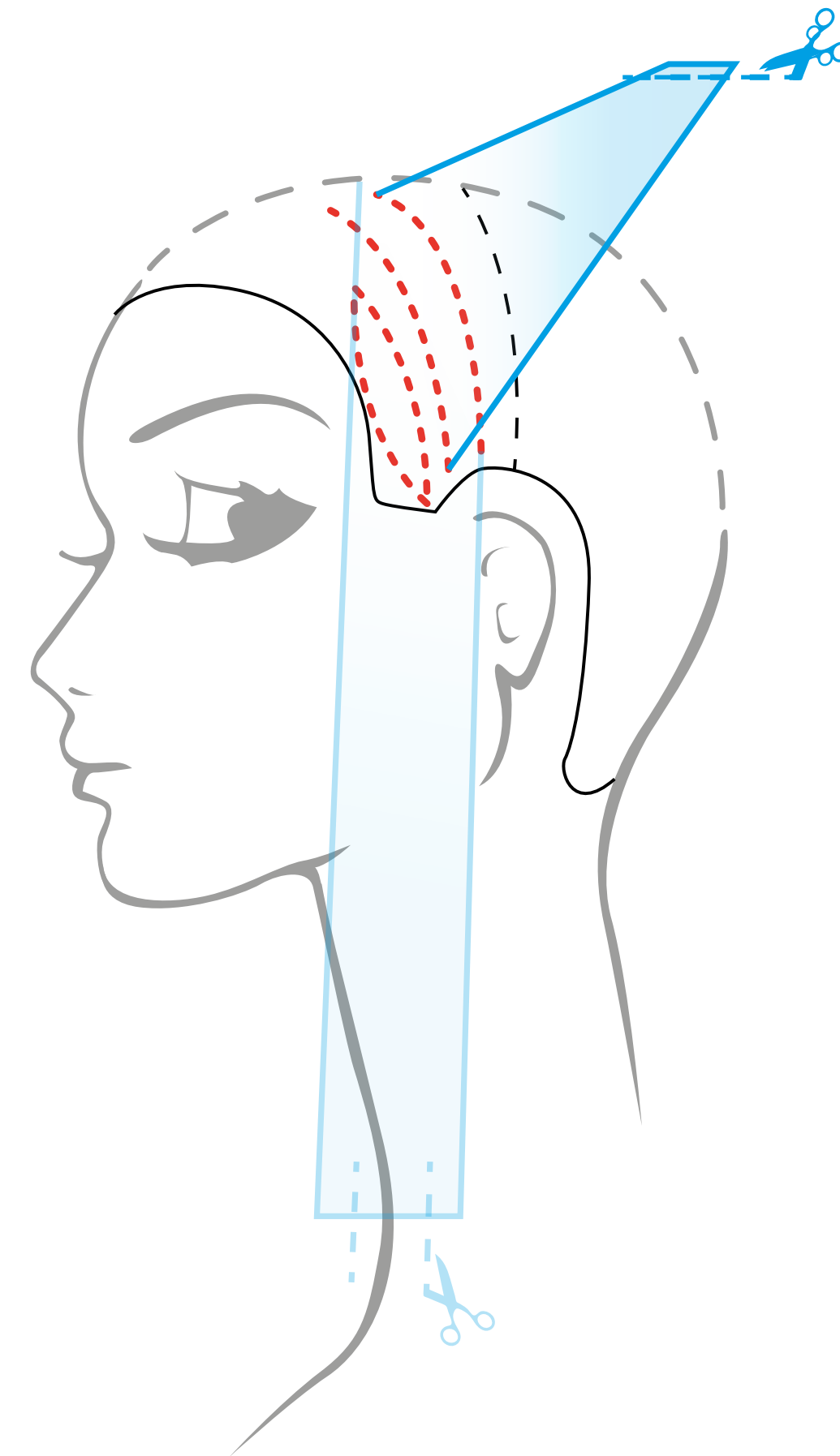


CUT

STEP BY STEP

To give the cut more movement, texturize the sides immediately after cutting, taking vertical sections about 1 cm wide and projecting the hair outward before thinning using the **point cutting technique**.

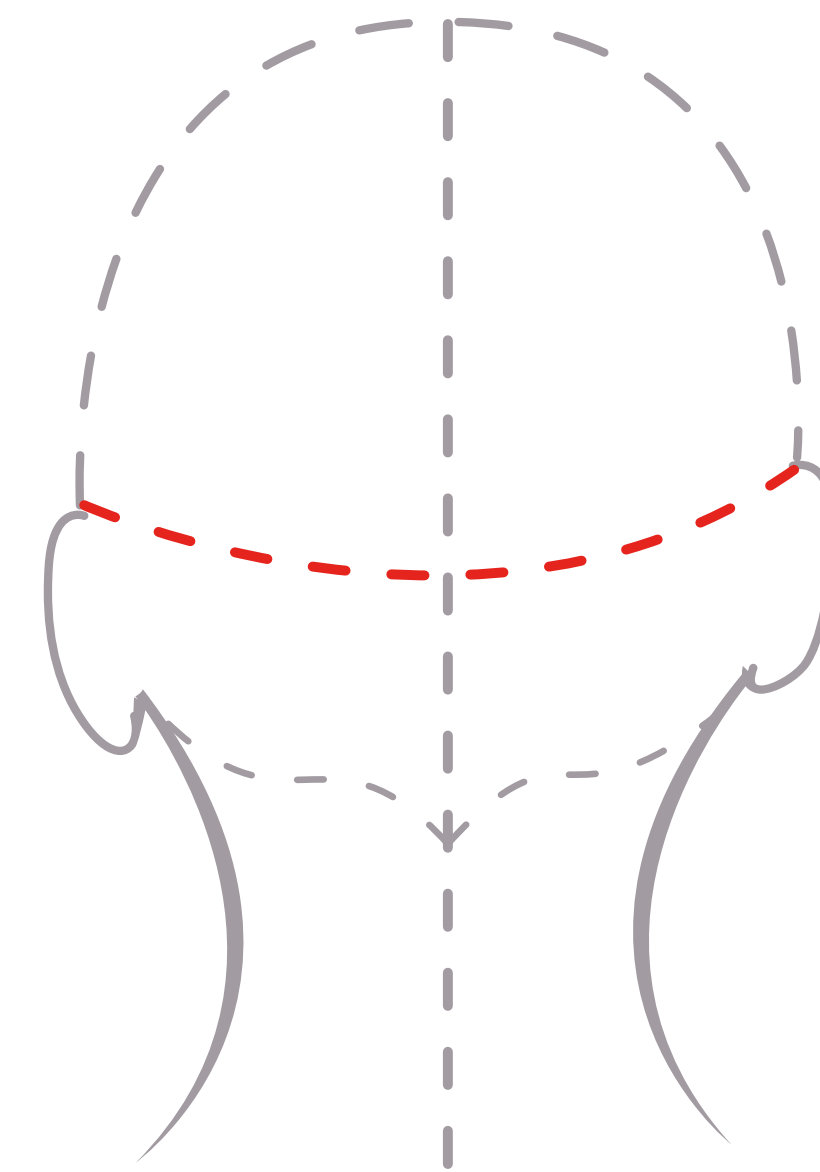
Repeat all steps on the other side.



CUT

STEP BY STEP

Isolate the front sides and divide the back into two areas, upper and lower, with a **section that goes from ear to ear** and through the occipital area.

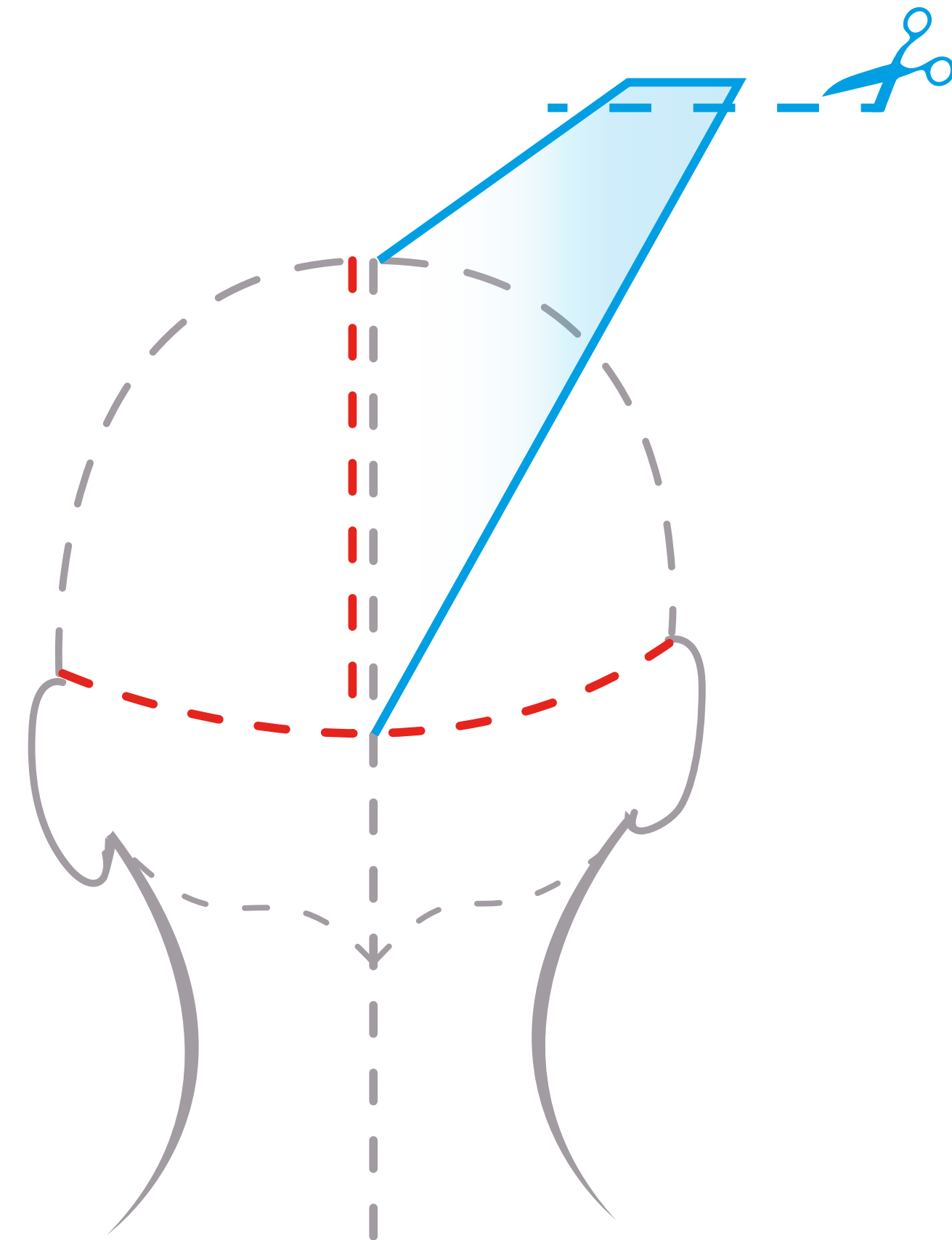


CUT

STEP BY STEP

In the upper area take a first vertical, 1-cm strand at the centre of the section and project it so that it is perpendicular to the head (taking the centre of the section as the reference point).

Cut using the **point cutting technique**, with a **horizontal cutting line**, taking the length of the strand at the occipital protuberance as the reference point.



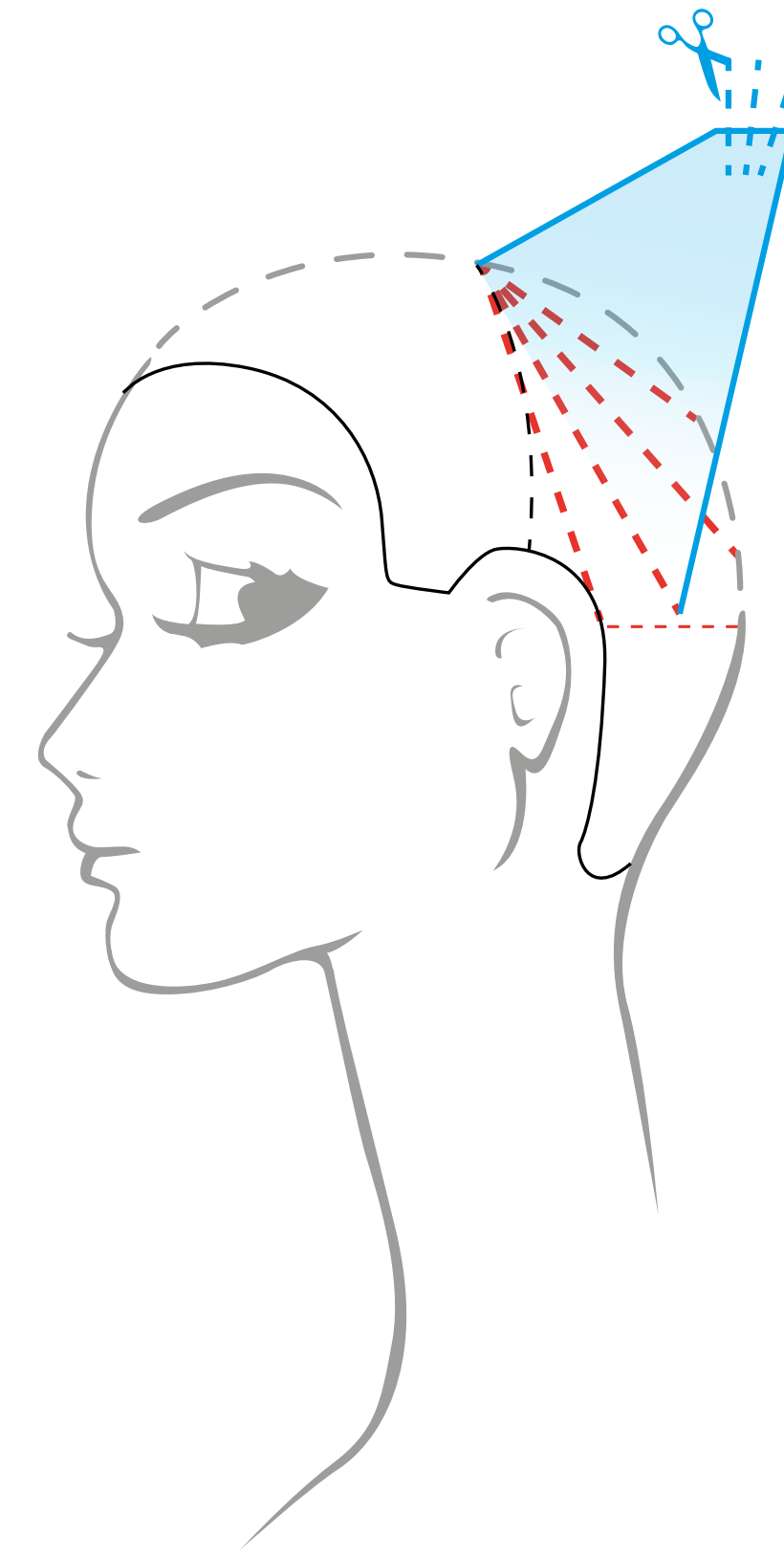
CUT

STEP BY STEP

Repeat the same cut with radiating sections, starting from the apex and using a **mobile guide line**.

Work from the centre to one side and then repeat, working to the other side.

On completing the cut, isolate the area with a section clip before releasing the nape section.

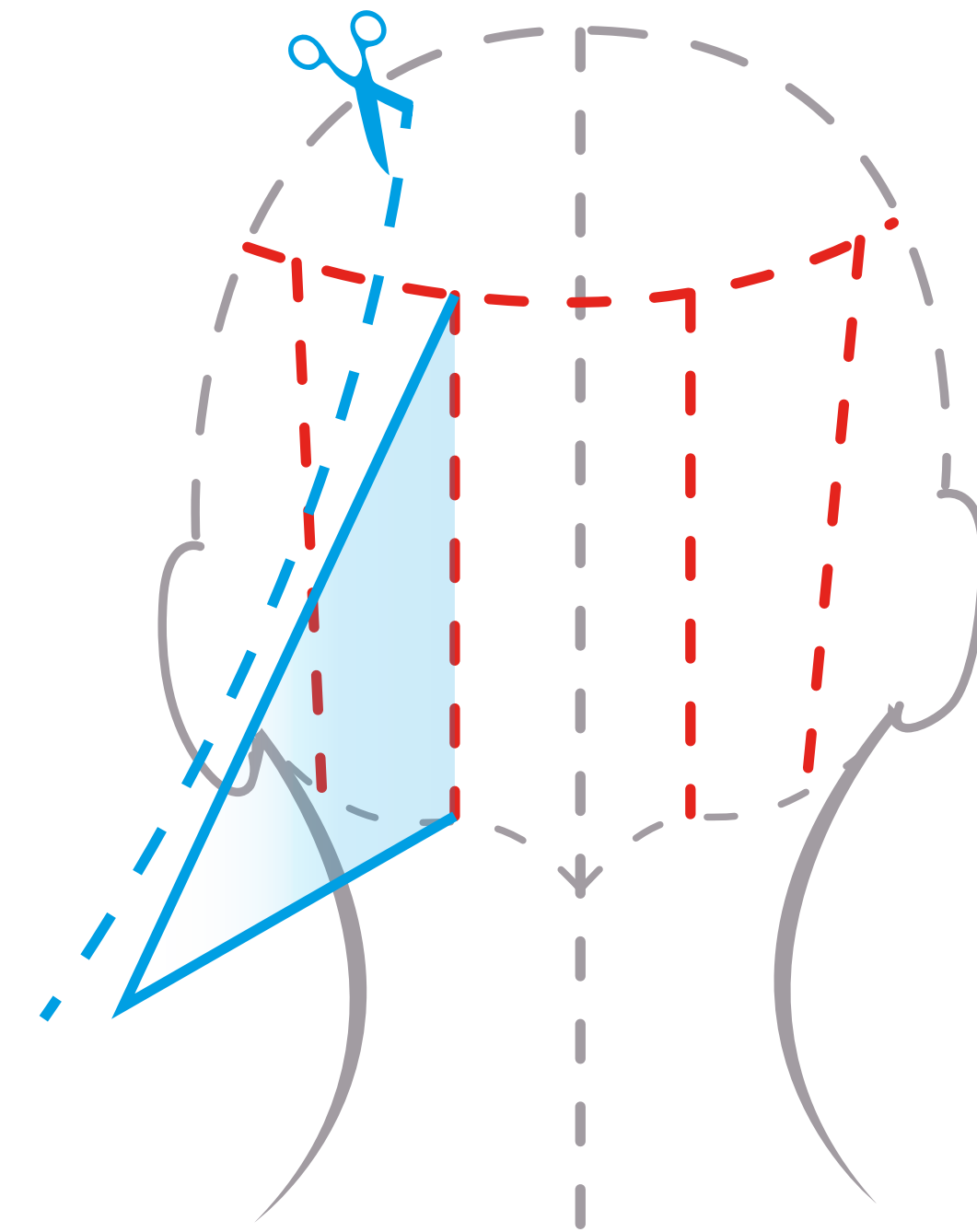


CUT

STEP BY STEP

In the lower back area, create a first vertical, central section about 1 cm thick.

Comb and project it outward, with a 45° angle.



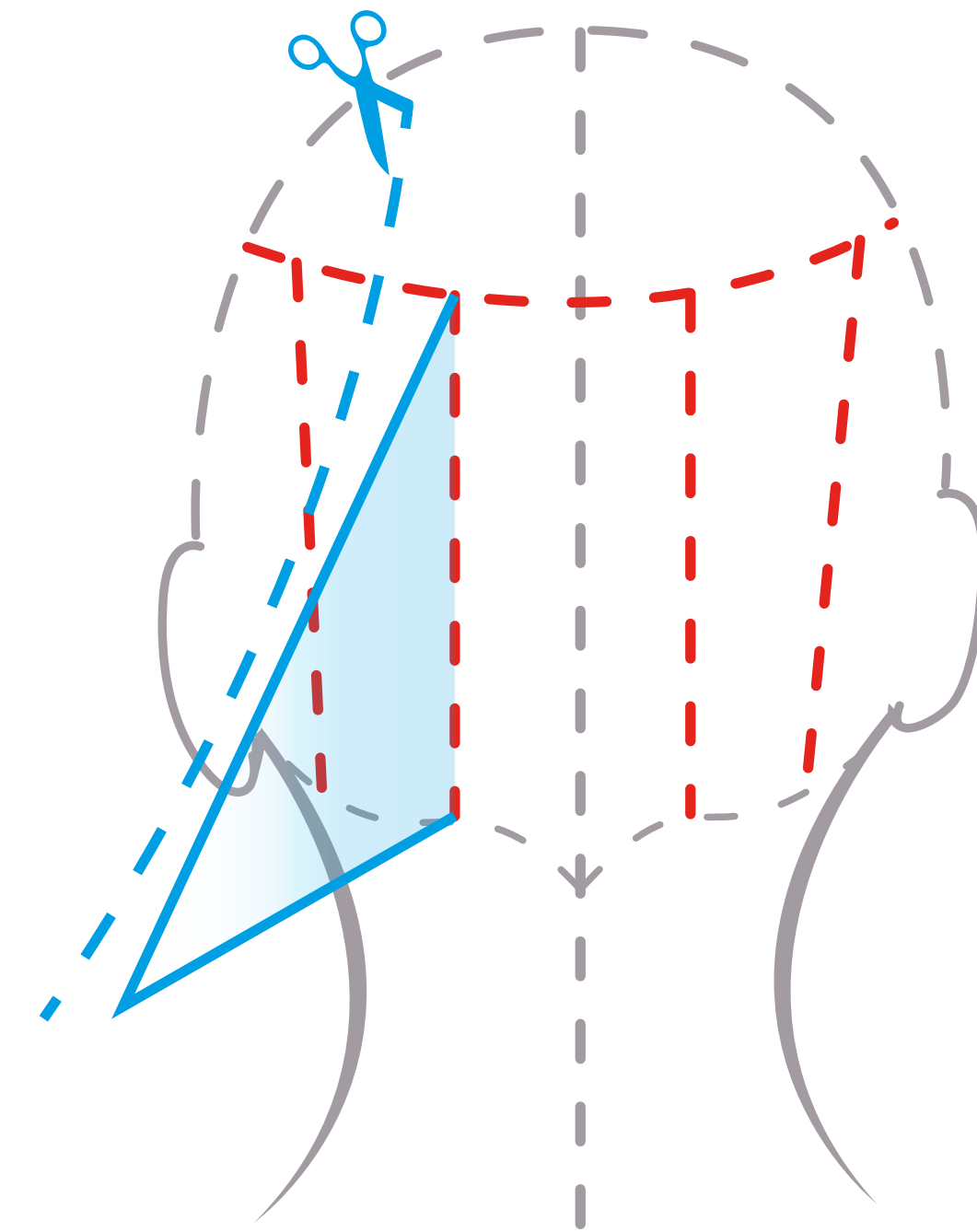
CUT

STEP BY STEP

Thin the ends using the **pinch cutting technique**.

Repeat the process, taking sections parallel to the first, throughout the area.

Do not connect the nape area with the upper area.



CUT

STEP BY STEP

Texturizing the fringe: comb the fringe in natural fall and texturize the ends by PINCH CUTTING the outer surface of the hair, following a diagonal cutting line.



CAPSULE COLLECTION

Elite

CHOICE COLOR

CUT AND COLOUR
STEP BY STEP



MEDAVITA