

CAPSULE COLLECTION

# Elite

CHOICE COLOR

---

CUT AND COLOUR  
STEP BY STEP

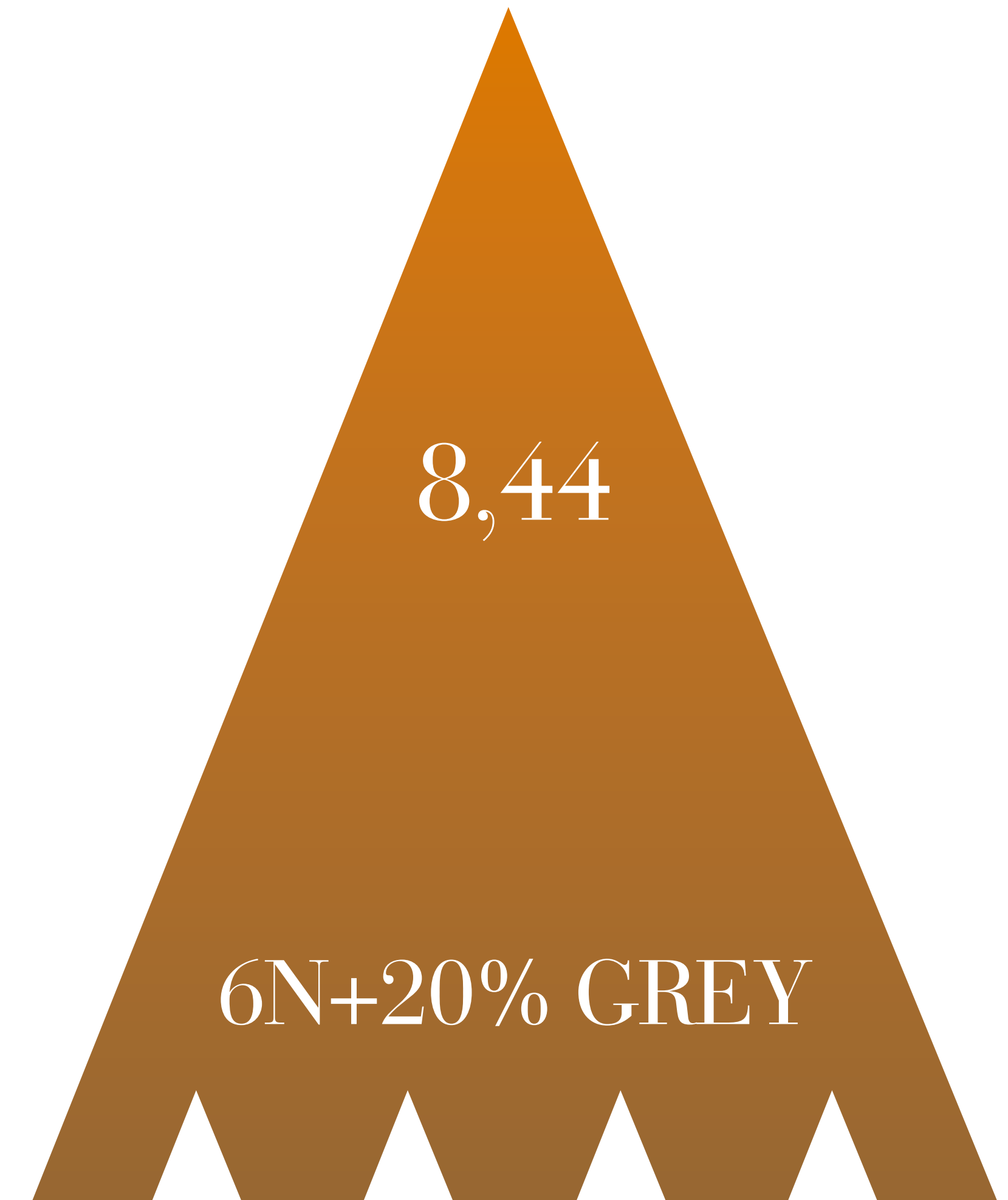
---



**MEDAVITA**



# TECHNICAL DIAGNOSIS



# CHOICE COLOR ELITE BASE COLOUR

Choice Color Elite 6,66  
roots lengths and ends

**Processing time**

35 minutes

**Mixing ratio**

1:1 20 vol. with Superior Oxidising Emulsion



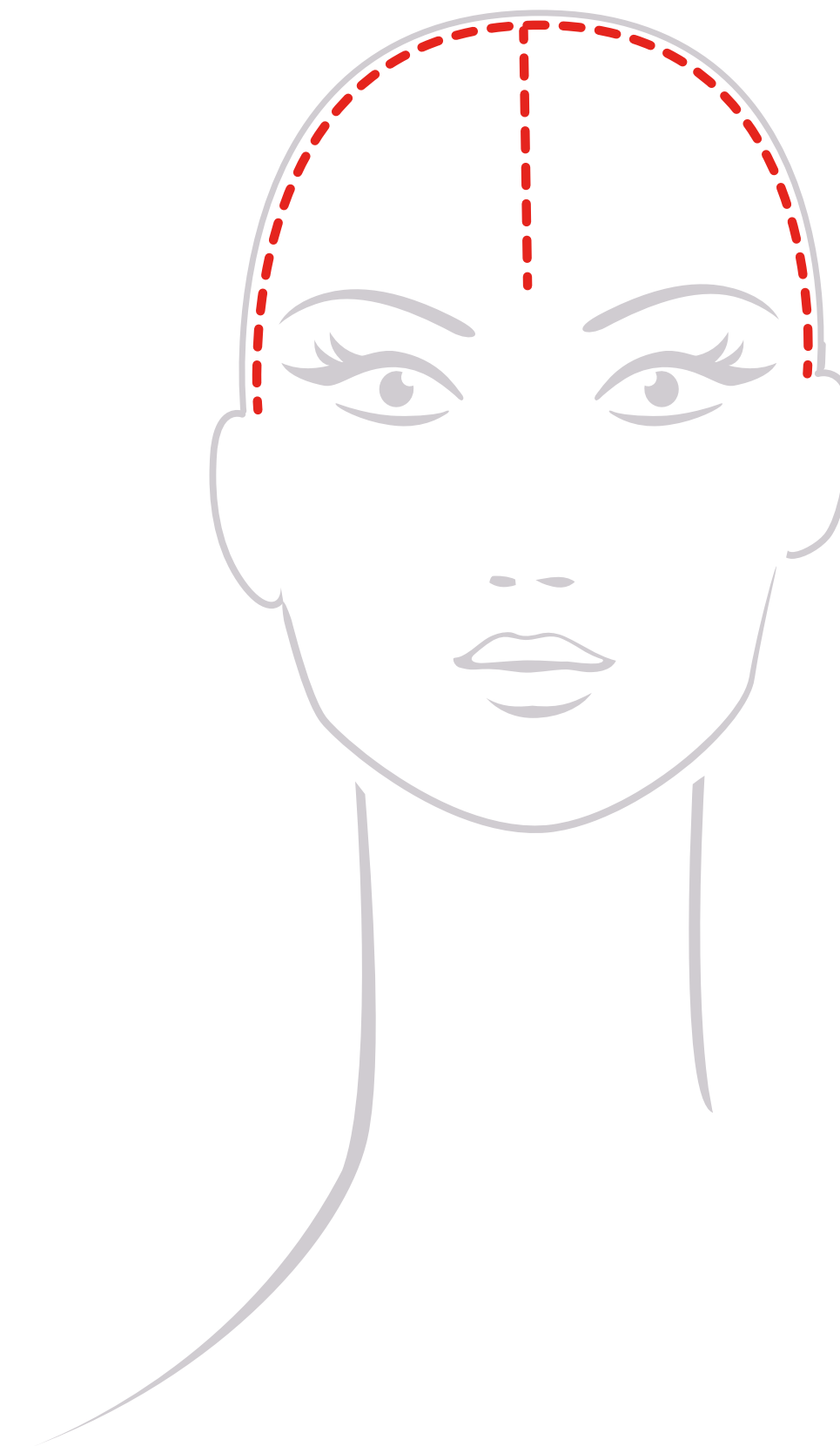
# CUT

## STEP BY STEP

Mark out a dividing line that goes from behind one ear to the other ear through the apex.

Next create a **central section** that goes from the apex to the front hairline (centre of the forehead).

---



# CUT

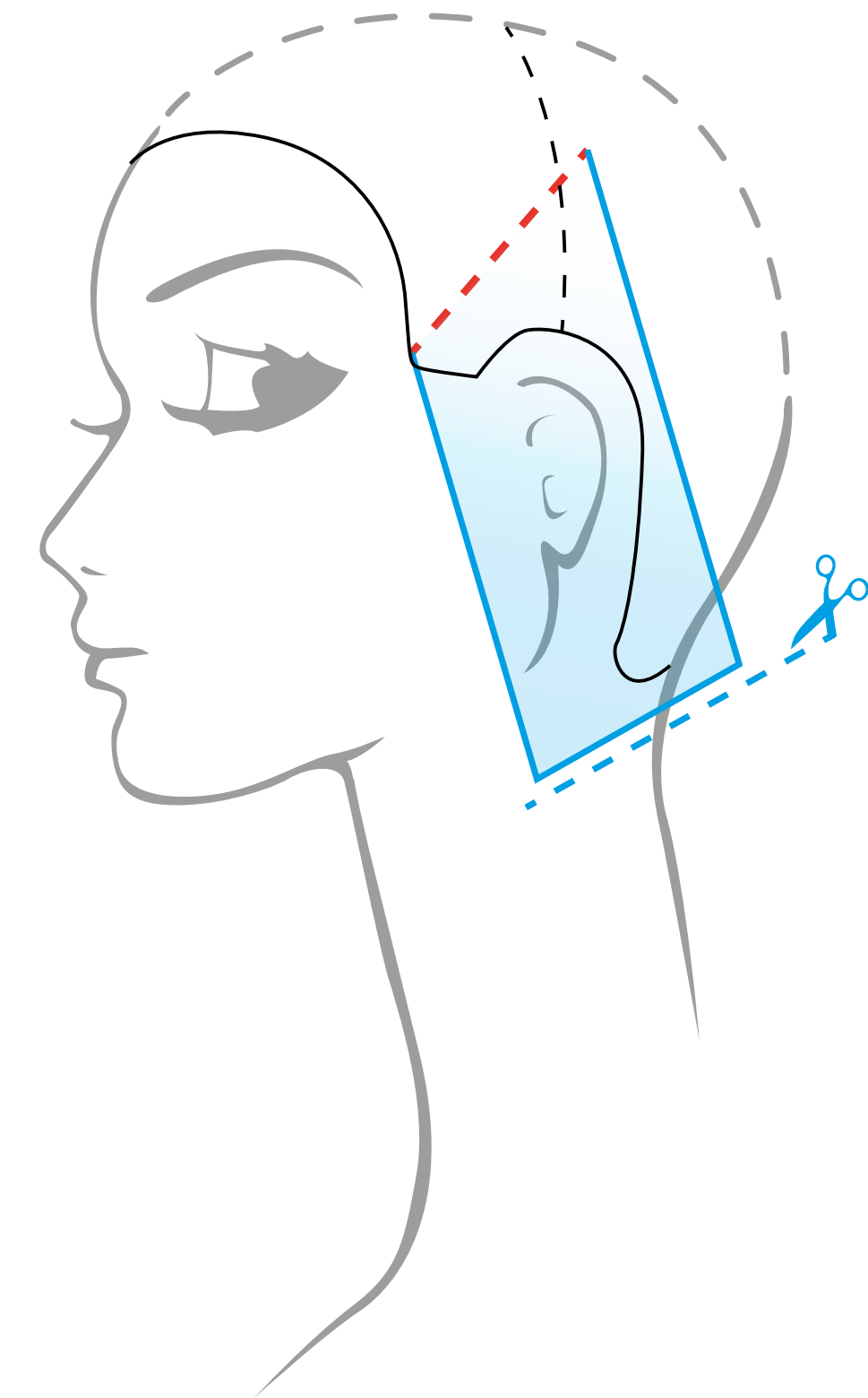
## STEP BY STEP

Creating the **guide line**.

Starting from the front side (temples), create a diagonal forward section at 30°.

Carry the strand so that it is perpendicular to the section and without projection.

---



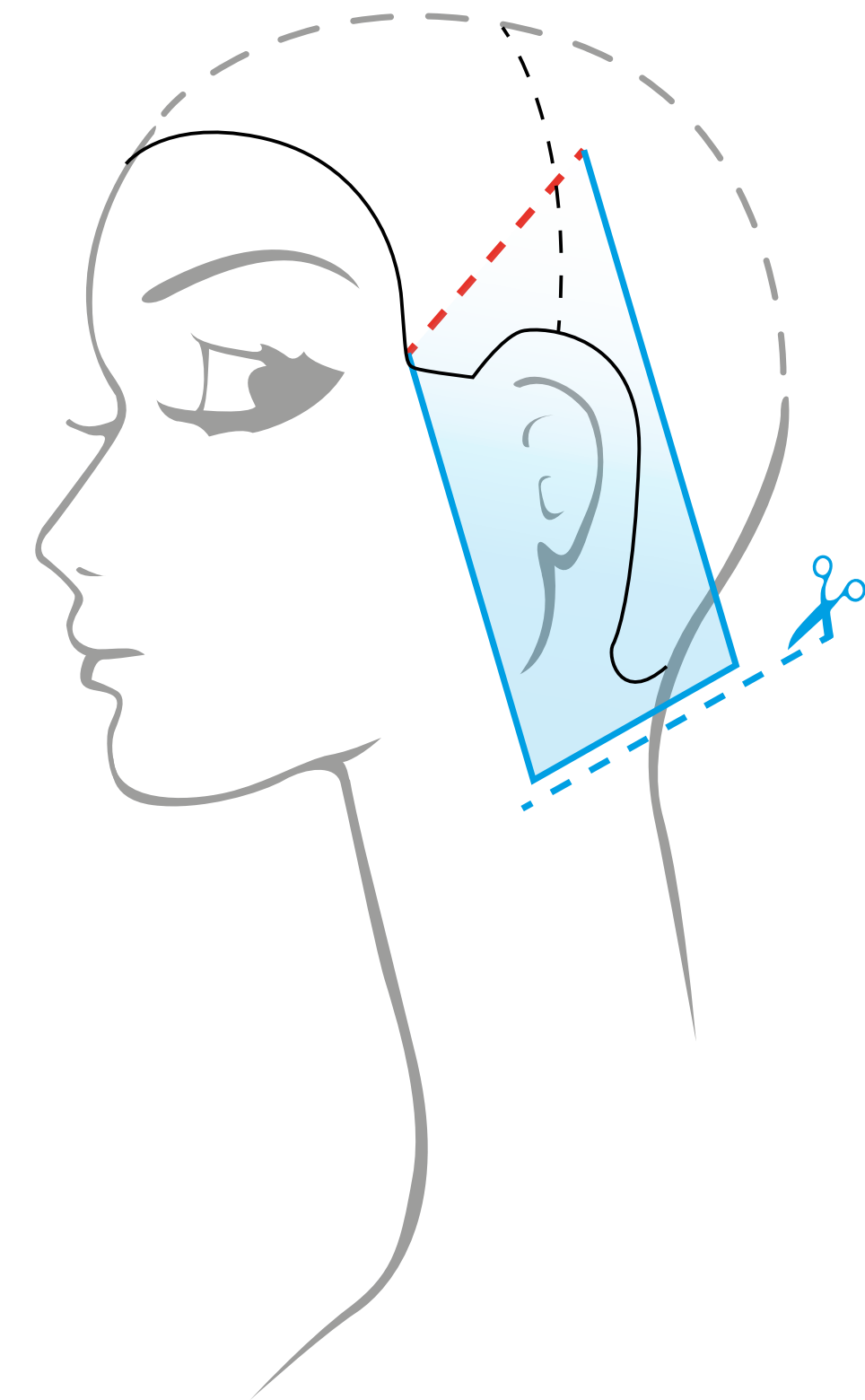


# CUT

## STEP BY STEP

Cut the hair using the **club cutting technique** while keeping the cutting line parallel to the base section, determining the maximum cutting length (you will come back to this area later and connect it with the back area).

---



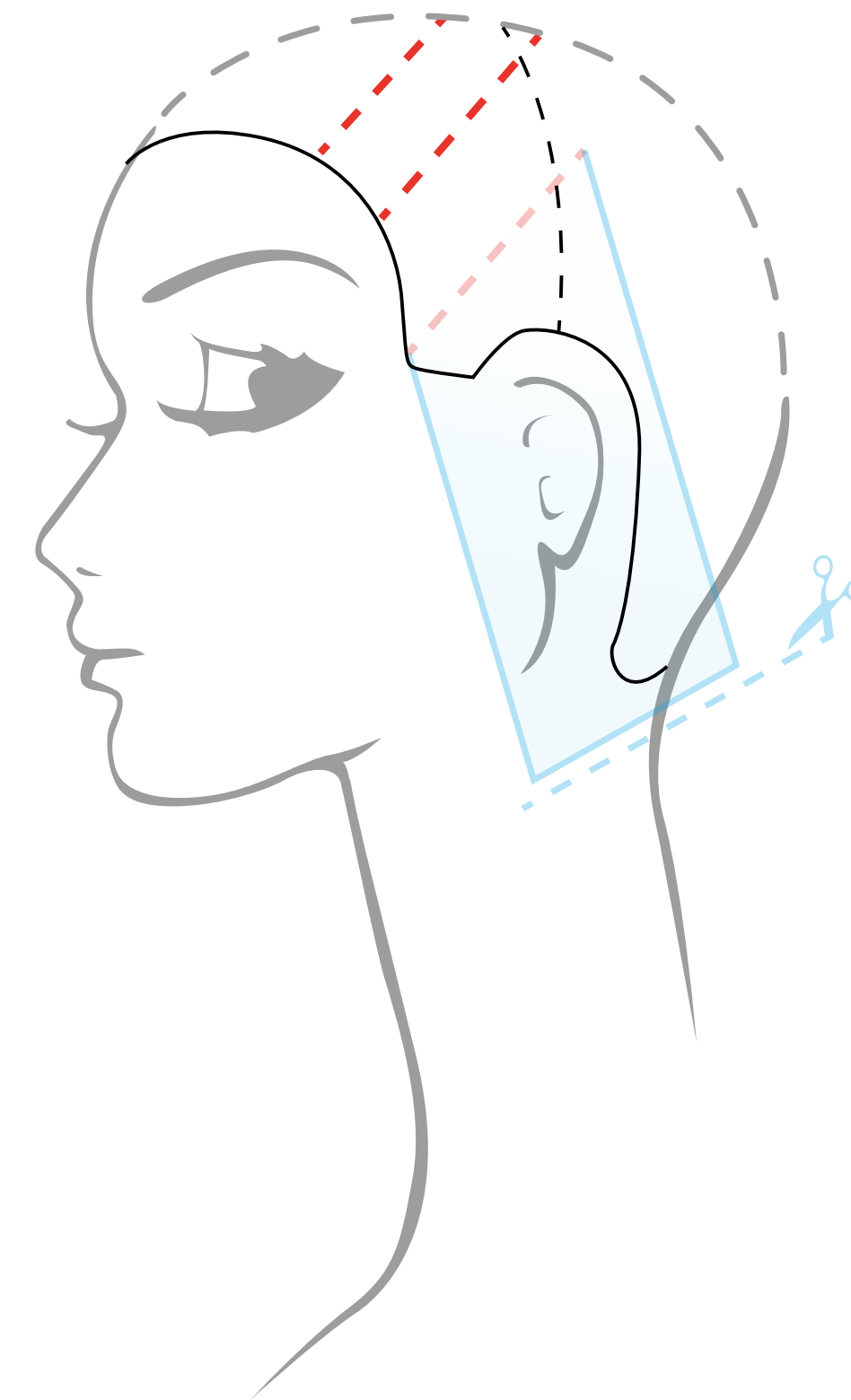
# CUT

## STEP BY STEP

Cut using a **fixed guide line** along the entire front side, finishing up along the central section line.

**Repeat the same cut symmetrically** along the other front side, keeping the same angles and sections.

---



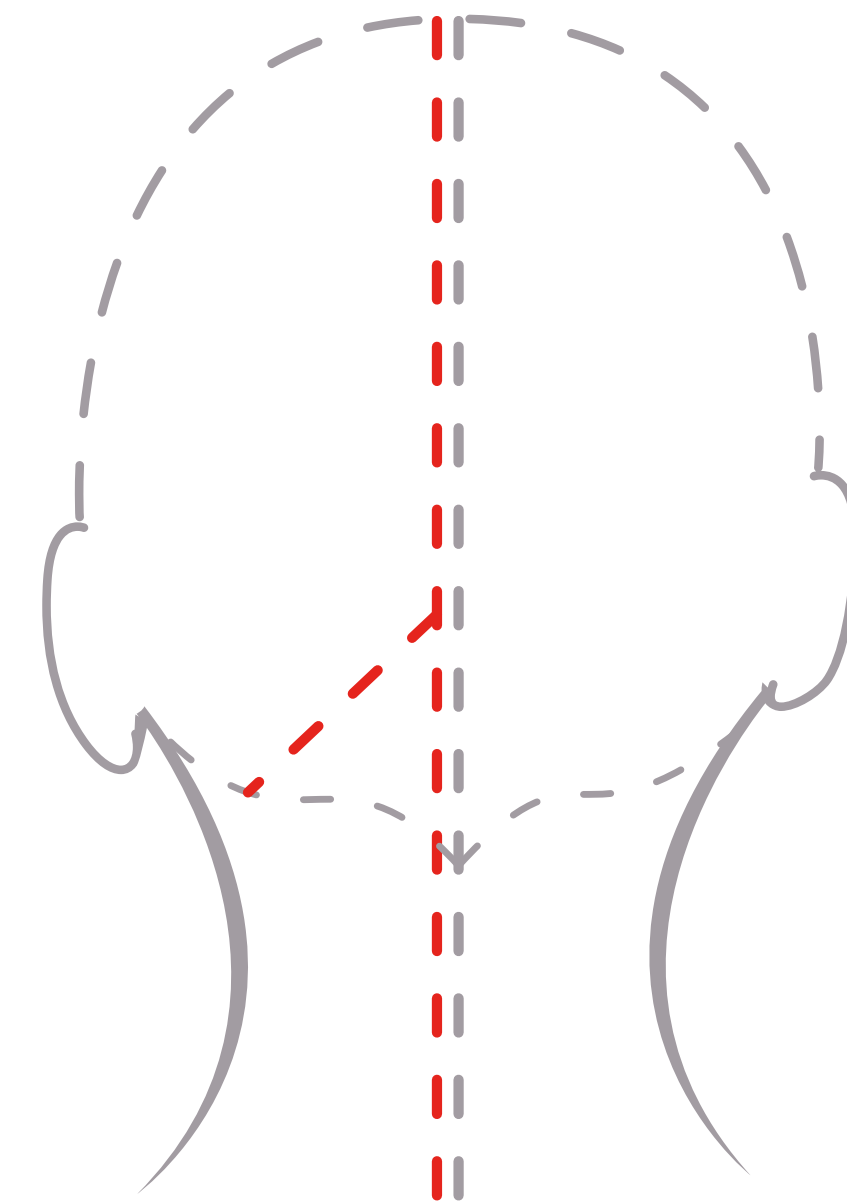
# CUT

## STEP BY STEP

Section the back area into **symmetrical cutting areas**, with a central vertical section from the apex to the centre of the nape.

Creating the guide line in the back area: starting from one of the back sides, mark out a **diagonal forward section at 30°**.

---





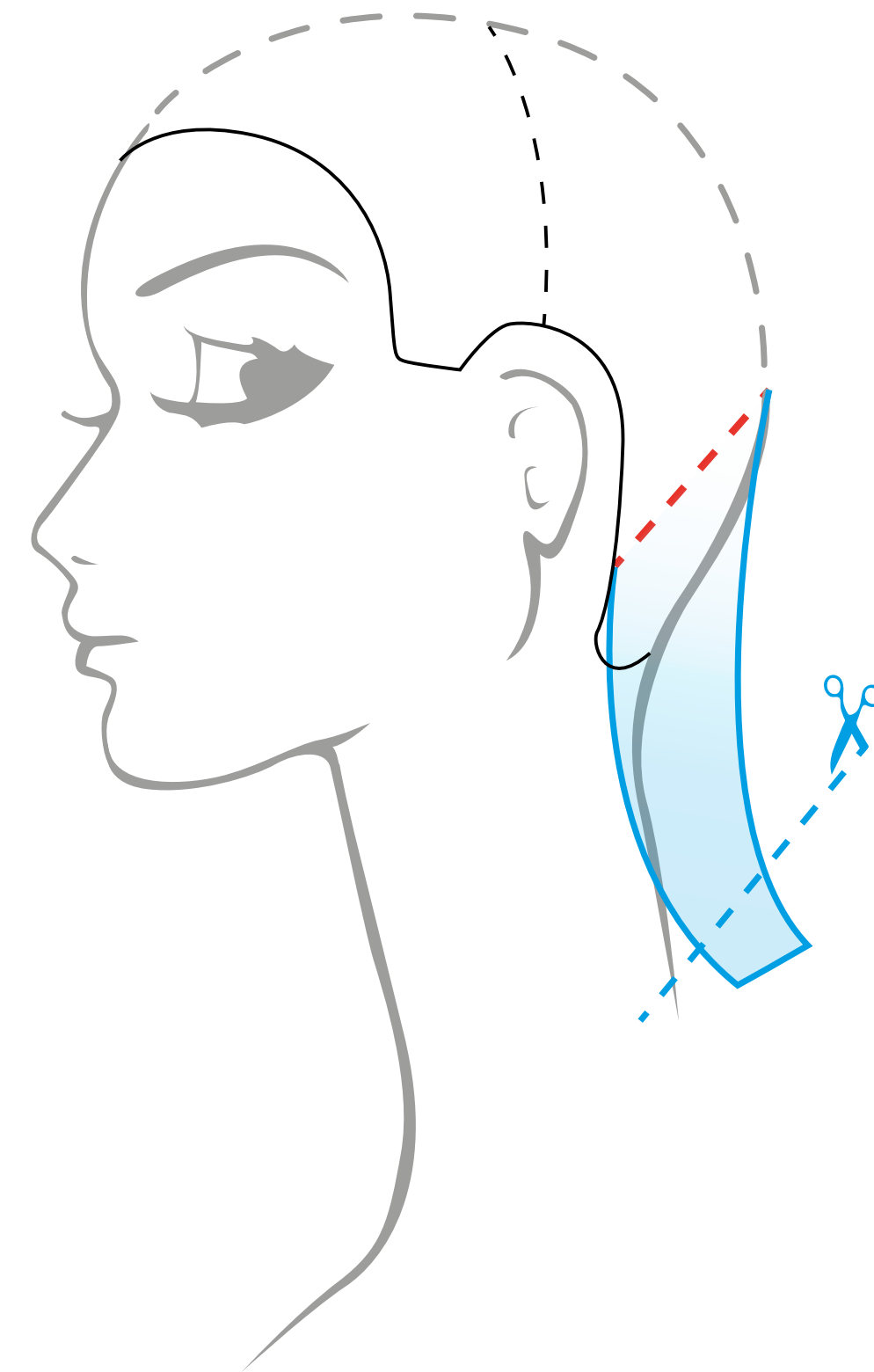
# CUT

## STEP BY STEP

Tilt the customer's head forward then comb the strand, with zero projection, and carry it so that it is perpendicular to the newly created section.

Cut using the **club cutting technique**, with cutting line parallel to the base section, defining the length of the nape.

---

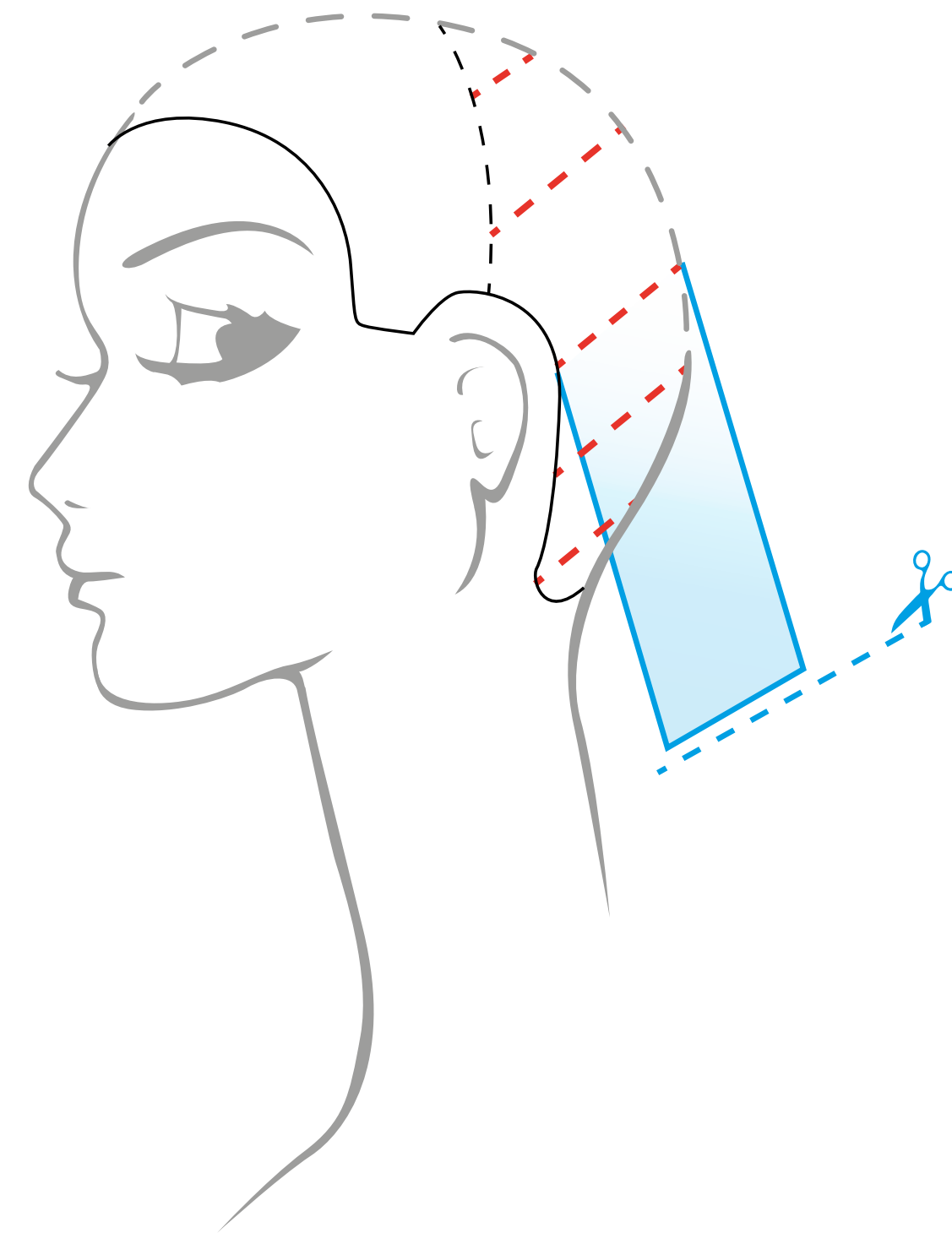


# CUT

## STEP BY STEP

Next create the same sections along the entire back side , with a mobile guide line and holding the strands with minimal projection. Always use the same angle for both the sectioning and the cutting line, using the **club cutting technique**.

---

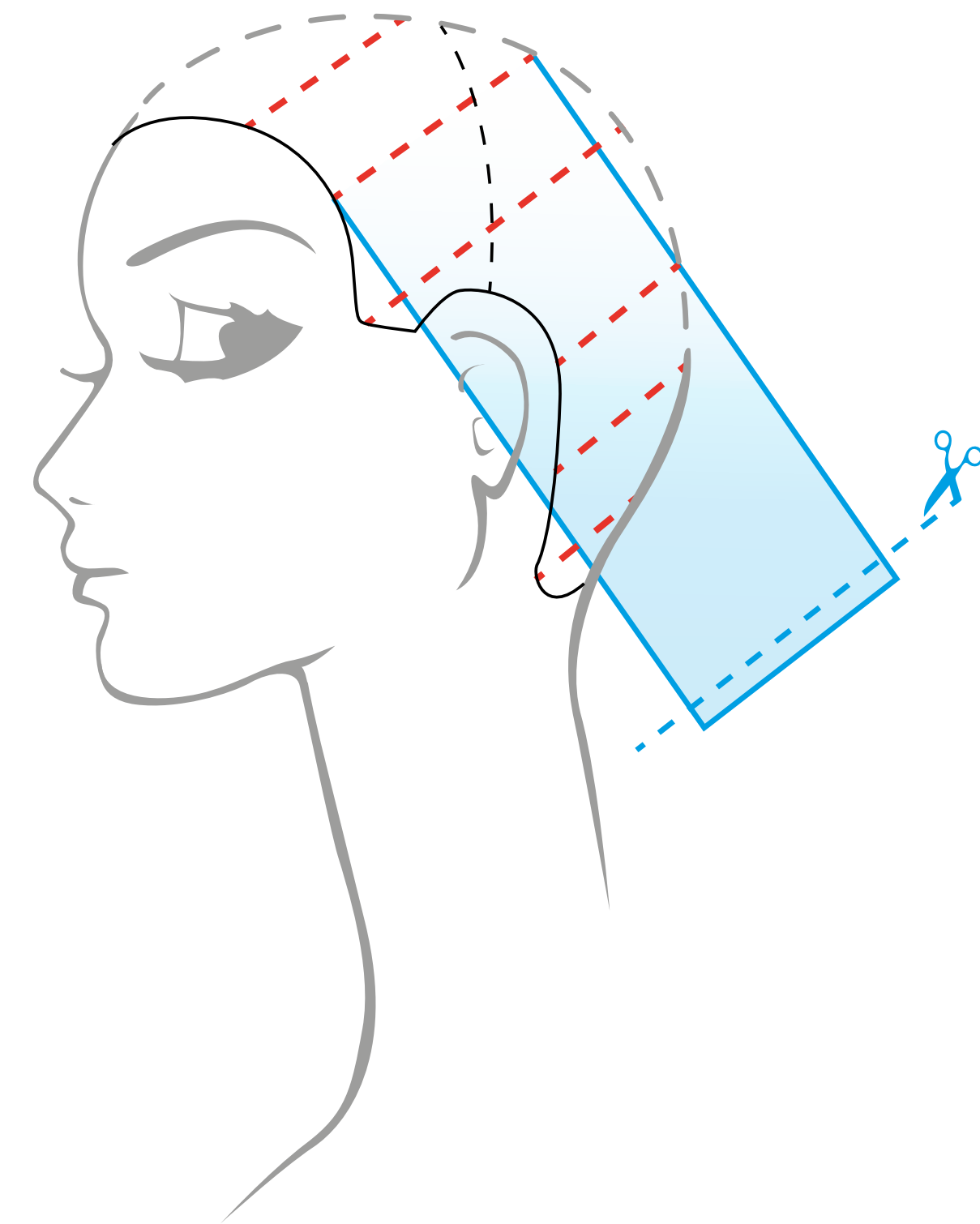


# CUT

## STEP BY STEP

Connect the back side with the front side, using the same angles and projections as before.

---





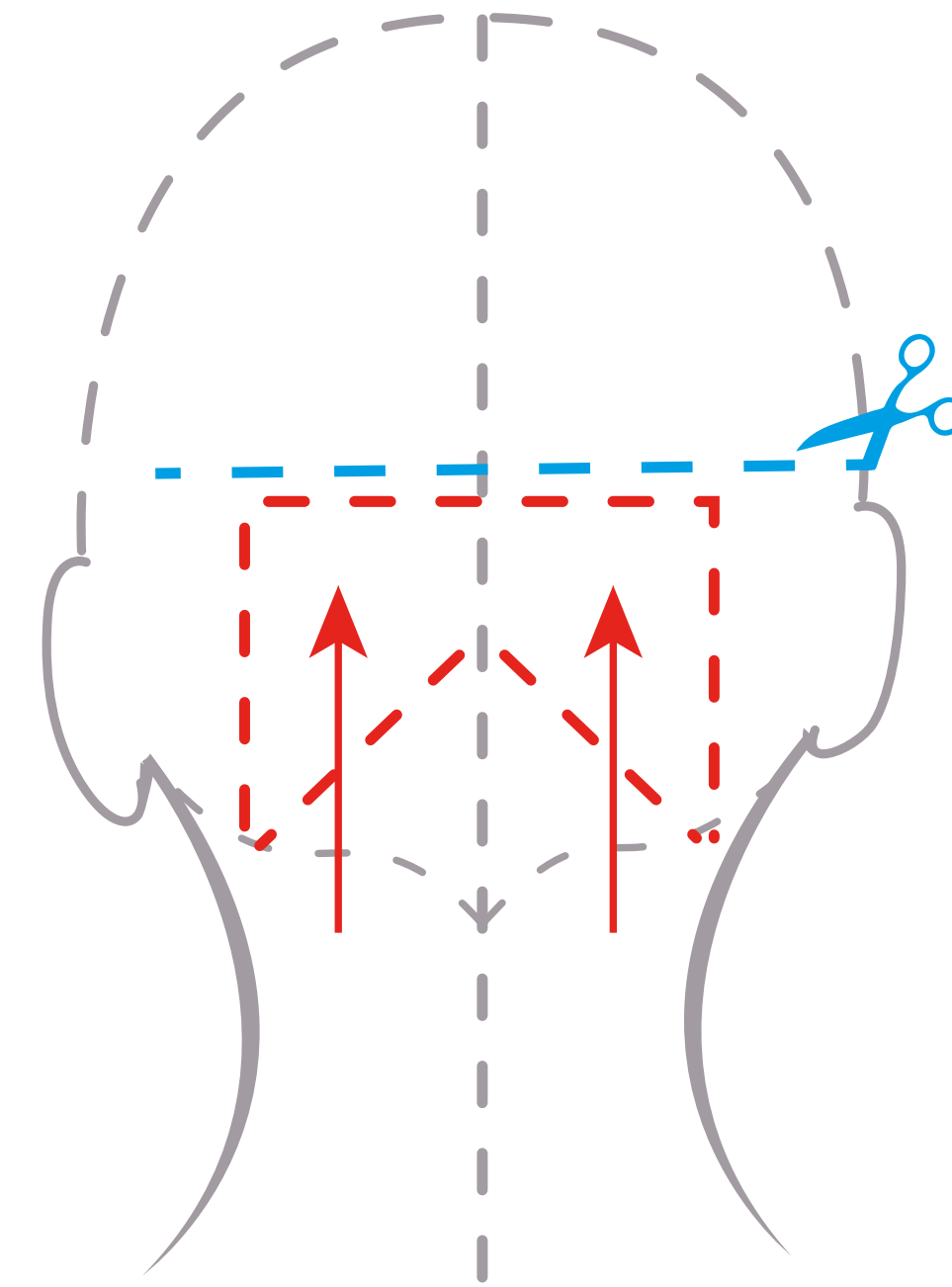
# CUT

## STEP BY STEP

**Texturizing:** creating a very pronounced graduation at the nape and temples.

Starting from the nape, isolate a symmetrical triangular section (the tip of the triangle will be on the centre of the nape - centre of the forehead line), about 2/3 cm deep.

---

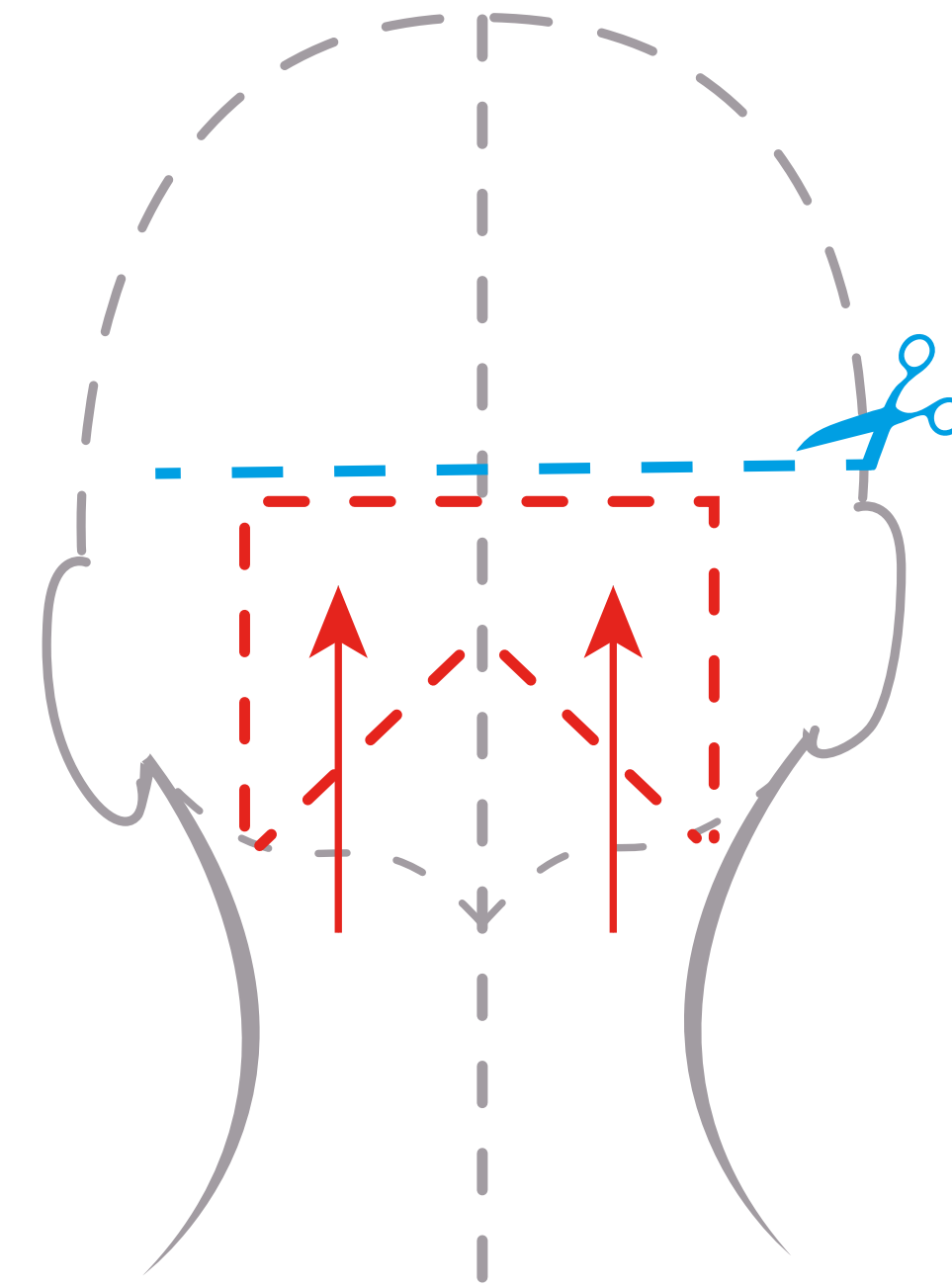


# CUT

## STEP BY STEP

Project the entire section vertically, in an upward direction, and use the **club cutting technique** taking the length of the hairline as the reference point.

---



# CUT

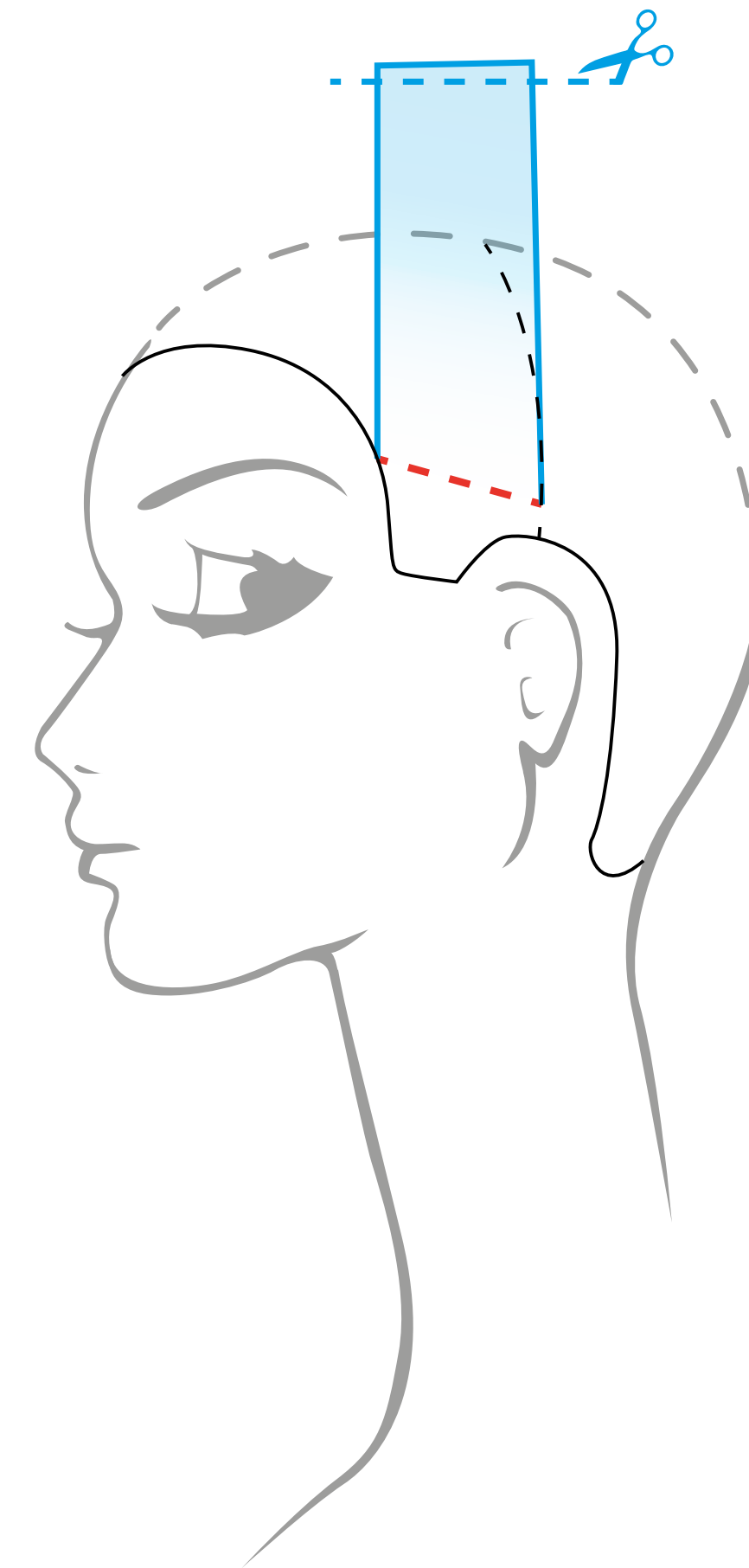
## STEP BY STEP

**Texturization:** creating a very pronounced graduation at the nape and temples.

Move onto one front side and take a diagonal backward section that goes from above the tip of the ear to the front hairline, at 30°.

The size of the strand will vary depending on the amount of hair, its structure and the desired effect.

---





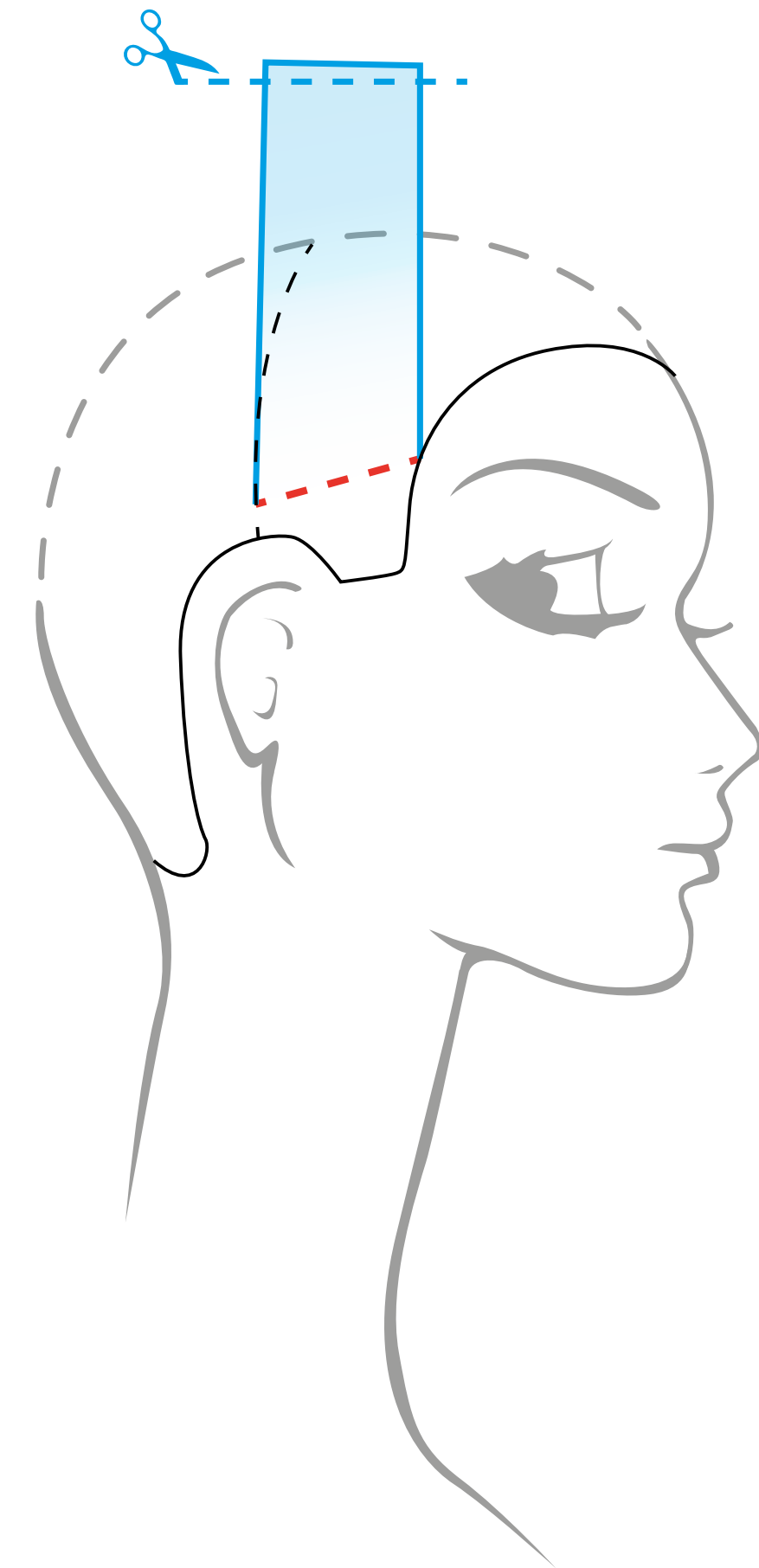
# CUT

## STEP BY STEP

Project the entire section at the apex and cut using the **club cutting technique**, taking the length of the sideburn hairline or the shortest length as the reference point.

Repeat symmetrically on the other front side.

---





CAPSULE COLLECTION

# Elite

CHOICE COLOR

---

CUT AND COLOUR  
STEP BY STEP

---



**MEDAVITA**