



**MEDAVITA**

# **KERATIN MIRACLE**



MEDAVITA  
KERATIN  
MIRACLE

# CAPSULE COLLECTION







**MEDAVITA**

**KERATIN  
MIRACLE**

MEDAVITA  
KERATIN  
MIRACLE

# CAPSULE COLLECTION



STEP BY STEP CUT



**JULIA**



**MEDAVITA**

**KERATIN  
MIRACLE**





## STEP 1

Start from the nape of the nape and create uniform layers all over the head. Create a central, vertical section at the back and take the hair so that it is perpendicular to the natural curve of the head while maintaining a 90° angle. Point Cutting technique. This first section will be the mobile guide line for the entire outer area.

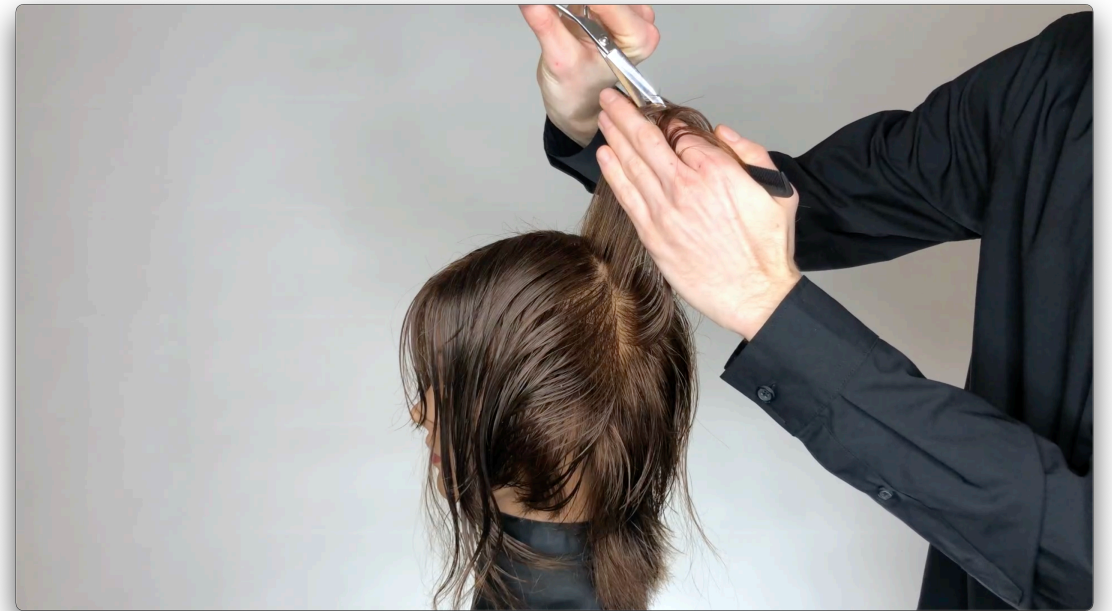


## STEP 2

Move to the inner area and create a vertical section. Next, define the guide line, taking the last length of the outer area as the reference point..

## STEP 3

Continue to the front, keeping the strand perpendicular to the sectioning and the cutting line parallel to the sectioning.



## STEP 4

Exclude the fringe, sideburns and nape, then layer the remaining part.



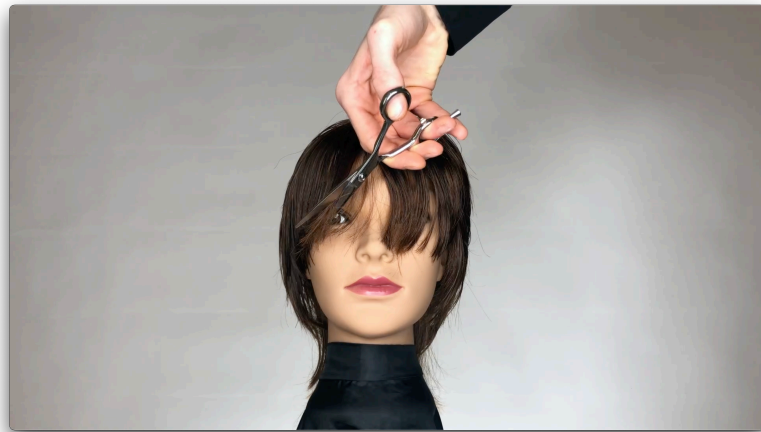
## STEP 5

Hold hair perpendicular to the sectioning; horizontal cutting line, Point Cutting technique. Texturise using the Notching and Tapering techniques.



## STEP 6

Texturise the areas previously isolated: Pinch cutting technique on the fringe and Slide cutting technique on the sideburns.



## *ILLUMINATING FRAMING color technic*

This technique enhances the gentle, graduated texturising of short or medium-length hairstyles, delivering a tone-on-tone shimmer effect that illuminates the face and lights up the eyes.

1. Once hair has been cut and dried into your customer's chosen style, isolate all contours with a section no thicker than 2 cm and zig-zag parting.
2. Following the hairstyle and, starting from the front, take and visually select small irregular strands.
3. Gently blend Medavita **NEVERENDING BLONDE CREATIVE POWDER** over each strand. The product will be applied gently towards the root, without touching it, with a gradual increase in saturation towards the ends, but only on the strand's outer surface.
4. Do this to all contours (front, side and back).
5. When the desired level of lift has been reached, rinse and then apply the high impact shade followed by the post-colour treatment.

**MEDAVITA**  
BEAUTY IS A CHOICE

